

*Flow\_Trak 3.0*

**Volume 5**

**Historical Data**

Jessel Technologies, Inc.

PO Box 58016  
Webster, Texas 77598  
Flow\_Trak@jesseltech.com

May 4, 2004

# Historical

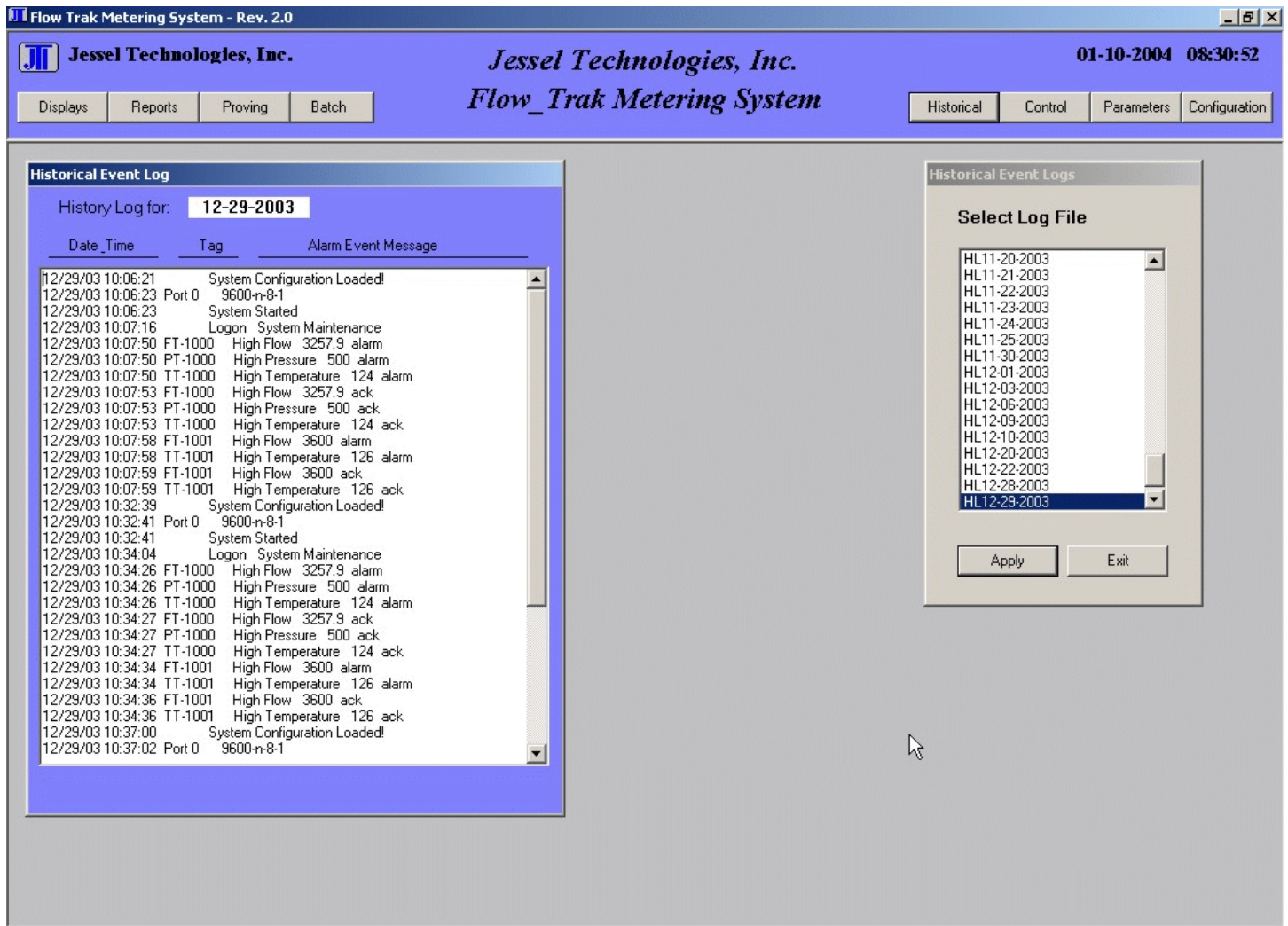
The historical functions provided allow storage of various reports to be saved to disk as well as being accessed for viewing through the system. As with other functions in the system, access to specific reports will required selection of a specific meter or group, .



**Figure 1**  
Historical Selection Menu

# Event Logs

Event log stored on the hard disk can be viewed by selecting the menu item “Event Logs”. A small window directed to the hard disk storage area will occur and the operator can then select the specific date desired to view. Once this item is selected, clicking the apply button will display the report in a secondary window. Additional event logs can be viewed by simply selection another entry. Once viewing is completed, the Exit button is clicked and both windows are closed.



**Figure 2**  
Event Log History Display

# Hourly Reports

If hourly reports are configured to be saved to hard disk, then this selection will allow the operator to view past hourly reports in a similar manner as with the event logs.

The screenshot displays the 'Flow Trak Metering System - Rev. 2.0' interface. The top bar includes the company logo 'Jessel Technologies, Inc.', the product name 'Flow\_Trak Metering System', and the date/time '01-10-2004 08:31:14'. Navigation buttons for 'Displays', 'Reports', 'Proving', 'Batch', 'Historical', 'Control', 'Parameters', and 'Configuration' are visible.

The main window is titled 'Historical Hourly Report' and shows a report for 'HRG0-12-29-2003-1000'. The report data is as follows:

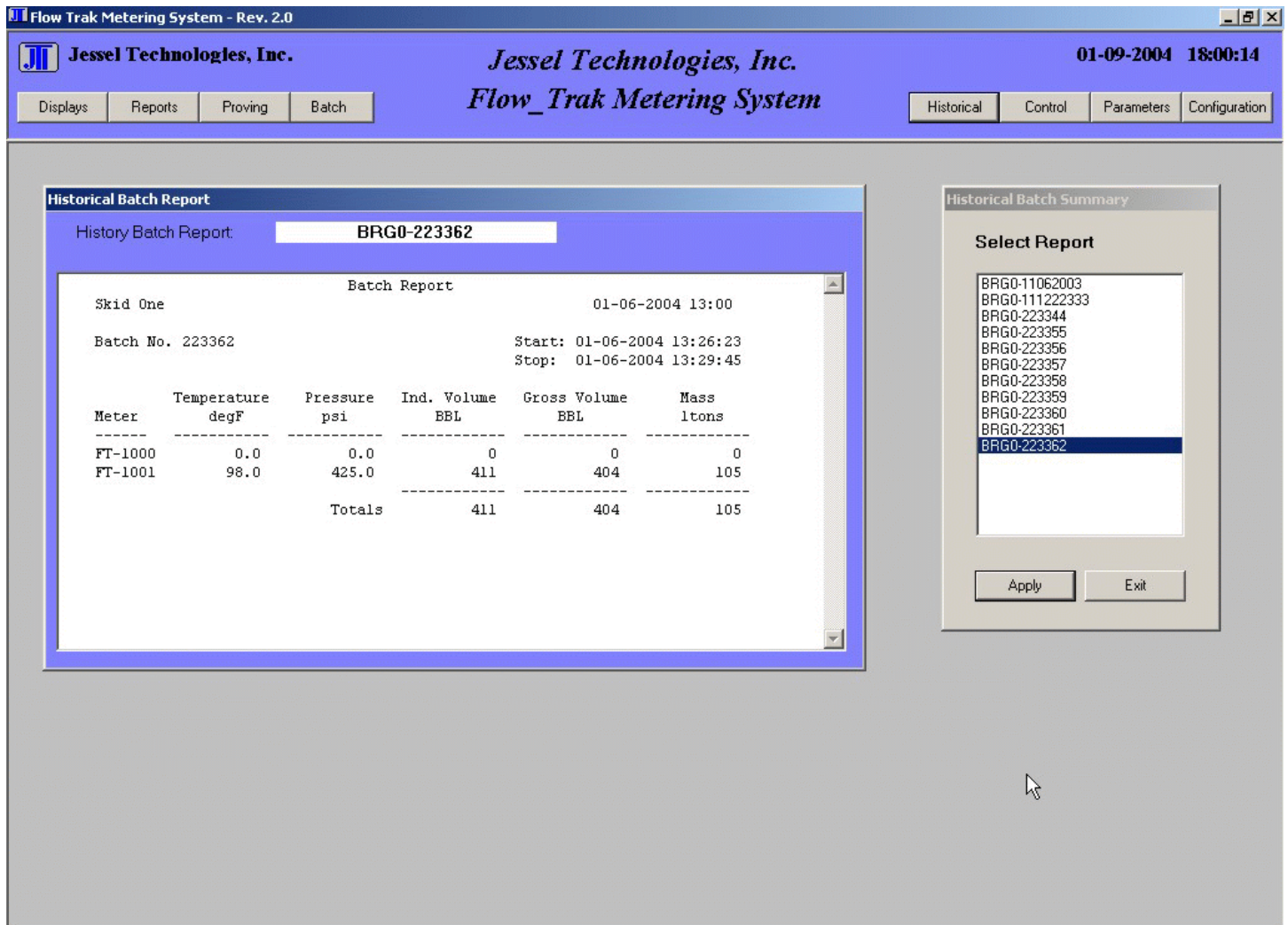
Skid One		Hourly Report				12-29-2003 10:00
Meter	Temperature degF	Pressure psi	Flow Rate BBL/hr	Gross Volume BBL	Mass ltons	
FT-1000	124.0	500.0	36158	34874	9032	
FT-1001	126.0	425.0	39963	38538	9981	
Totals			6858	73412	19013	

To the right, a 'Select Report' dialog box is open, showing a list of report IDs. The ID 'HRG0-12-29-2003-1000' is selected and highlighted. The dialog includes 'Apply' and 'Exit' buttons.

**Figure 3**  
Hourly Report History Display

# Batch Reports

Saving batch reports to disk is also a configurable option in the system. If reports have been select to be saved, then all batch reports, either by meter or group depending on the configuration, can be viewed in a similar manner as event logs and hourly reports.



**Figure 4**  
Batch Report History Display

# Delivery Tickets

When the system has been configured to save delivery tickets to hard disk, these reports can also be viewed in a similar manner as the batch reports. Since delivery tickets are specifically to an individual meter, the operator must select the specific meter desired prior to viewing. File names will utilize a unique numbering sequence by the system.

**Flow Trak Metering System - Rev. 3.02**

**Jessel Technologies, Inc.** *Jessel Technologies, Inc.* **05-18-2004 08:57:49**

Displays Reports Proving Batch Historical Control Parameters Configuration

**Historical Delivery Tickets**

History Delivery Ticket **DT-123470**

Jessel Technologies, Inc.  
Flow\_Trak Metering System

BUNKER DELIVERY TICKET SAUDI ARABIAN OIL COMPANY  
Saudi Aramco 5310-A (10/92) Ras Tanura, Saudi Arabia

Delivered to Fab 2

Cargo Order No. Ticket No. Parcel  
123470 413A Three

Tank NO. Product  
T-9885 Crude

Viscosity

Gravity @ 60F	Flash Point	SUS	SFS	Fluidity	Pour
API Spec.	deg F	@ 100 F	@ 122 F	@ 32 F	Point +
.5995 .6046	.6046	.9	.7	.5	.3

Loading Date Time Temperature  
Started 05-17-2004 13:32:29 .0  
Completed 05-17-2004 13:32:42 .0

**Select Report**

- DT-123456
- DT-123457
- DT-123458
- DT-123459
- DT-123460
- DT-123461
- DT-123462
- DT-123463
- DT-123464
- DT-123465
- DT-123466
- DT-123467
- DT-123468
- DT-123469
- DT-123470**

**Figure 5**  
Delivery Ticket History Display

On the display of the historical delivery ticket, there is the option to edit any data or text that has been defined in the ticket format. By pressing the Data Edit button, each editable field will be prompted to the operator where he can accept the existing value or enter a new value for the item. On entering the edit function, a backup of the current report is generated with a numeric extension of “.000” for the first edit. Subsequent edits will create additional backups with “.002”, “.003” etc. for tracking purposes.

The image shows a software dialog box titled "Edit Delivery Ticket Data". The dialog has a light gray background and a blue title bar. Below the title bar, the word "Parcel" is centered. There are two input fields: "Current Value" and "New Value", both containing the text "One". At the bottom of the dialog, there are two buttons: "Apply" and "Exit".

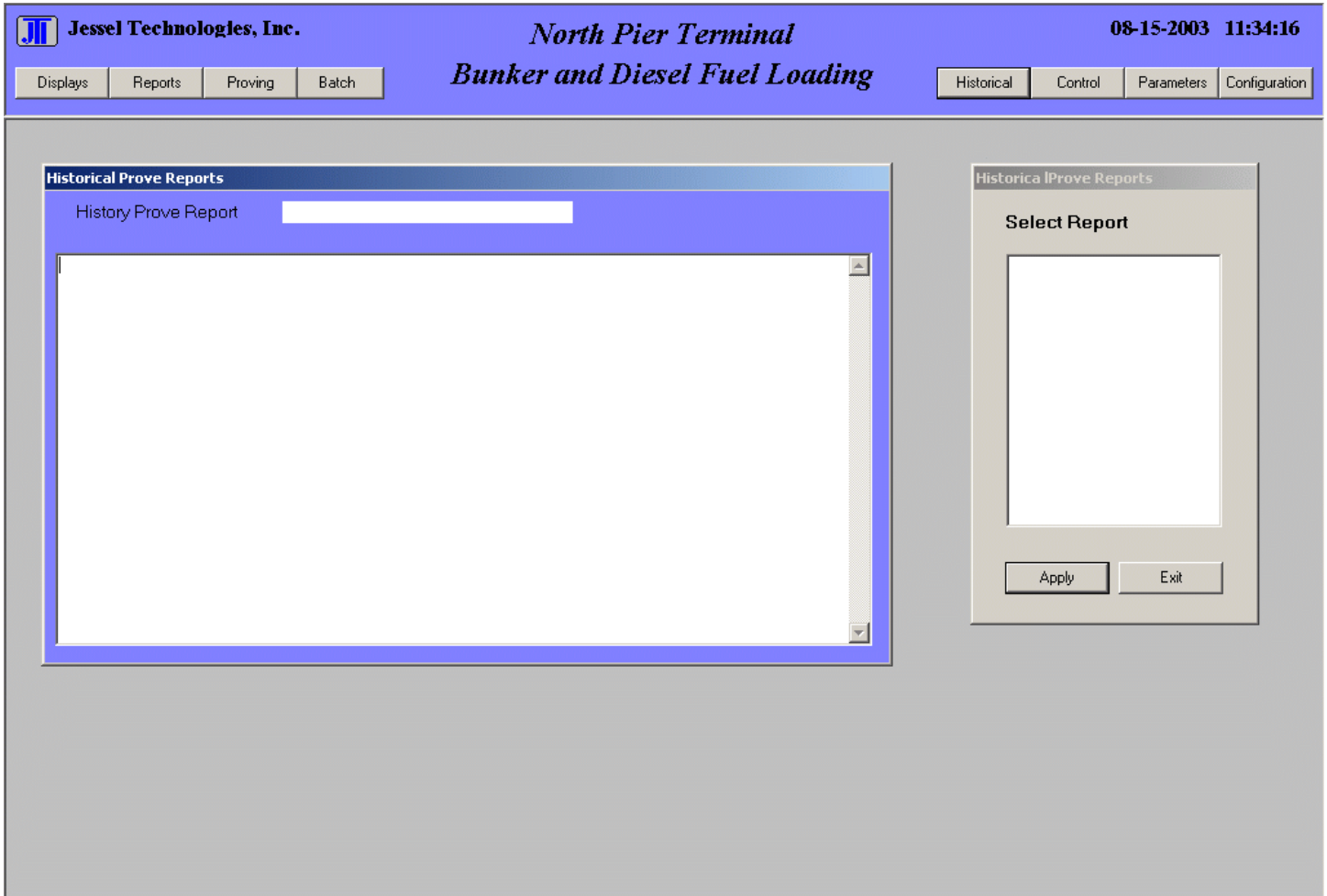
**Figure 6**  
Delivery Ticket Edit Display

By pressing the Apply button the new value is substituted for the current value, while pressing the exit button will use the current value for the item. At the completion of the edit cycle, a new report will be generated and printed, if the print option has been configured. Also the display of the report is refreshed with the new output report to be viewed by the operator. The latest report is always maintained as the delivery ticket name without extension, all previous reports have a the numeric extensions.

For maintenance of the edit prompts and defaults associated, see the section in configuration for reports.

# Proving Reports

Proving reports saved to hard disk are accessed by the specific meter tag name followed by the date and time of the prove. Operation of the display is similar to the displays described above.



**Figure 7**  
Prove Report History Display